

INTRODUCTION

➤ Unveiling flaws in dual-aspect monism:
Taheri's theories & T-Consciousness experiments.

WHAT IS DUAL ASPECT MONISM?

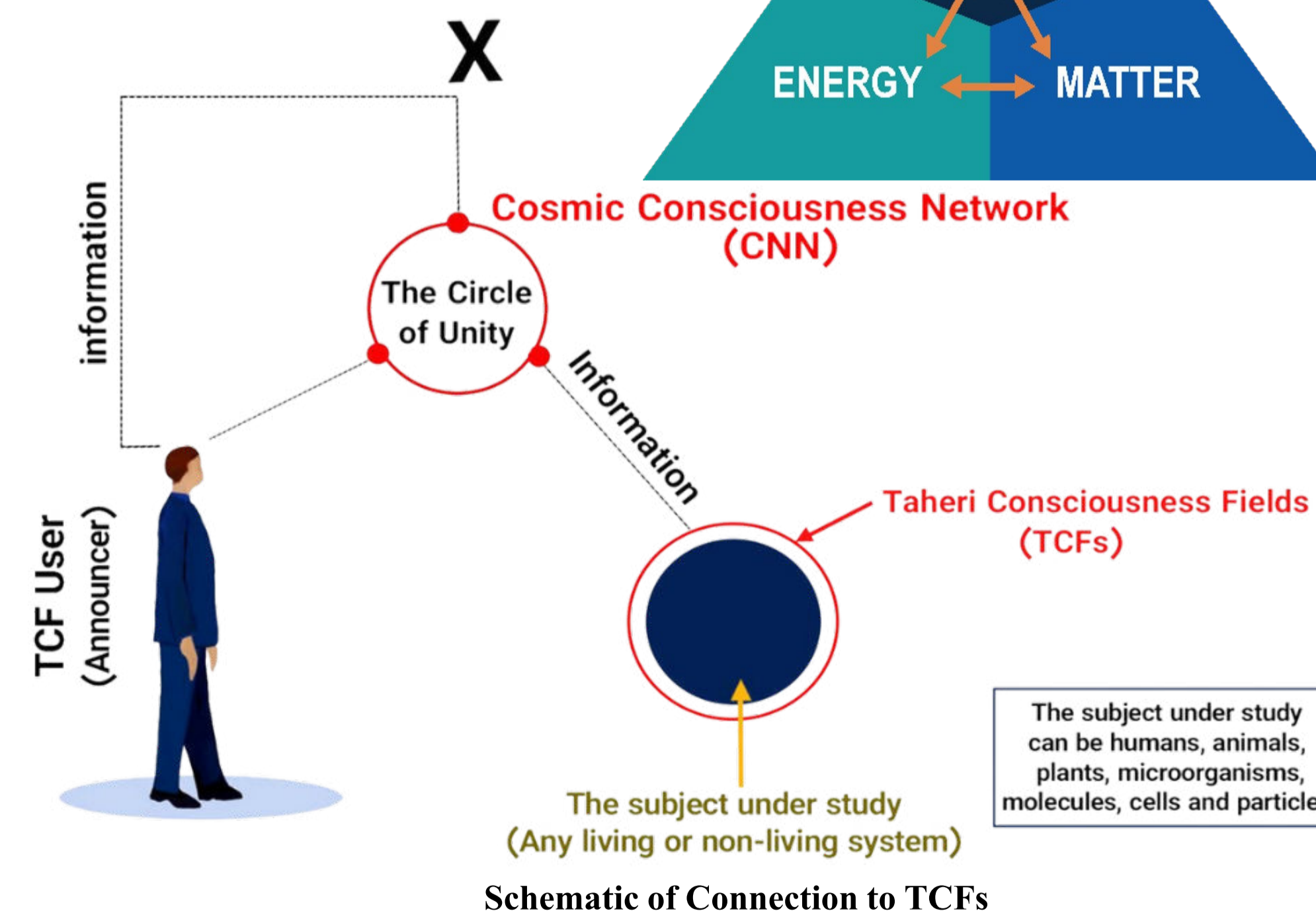
- Mind and body as one reality.
- Harmonizing mind-body dichotomy.
- A response to Chalmers' Hard Problem of Consciousness.

AMBIGUITIES & LIMITATIONS IN DUAL-ASPECT MONISM

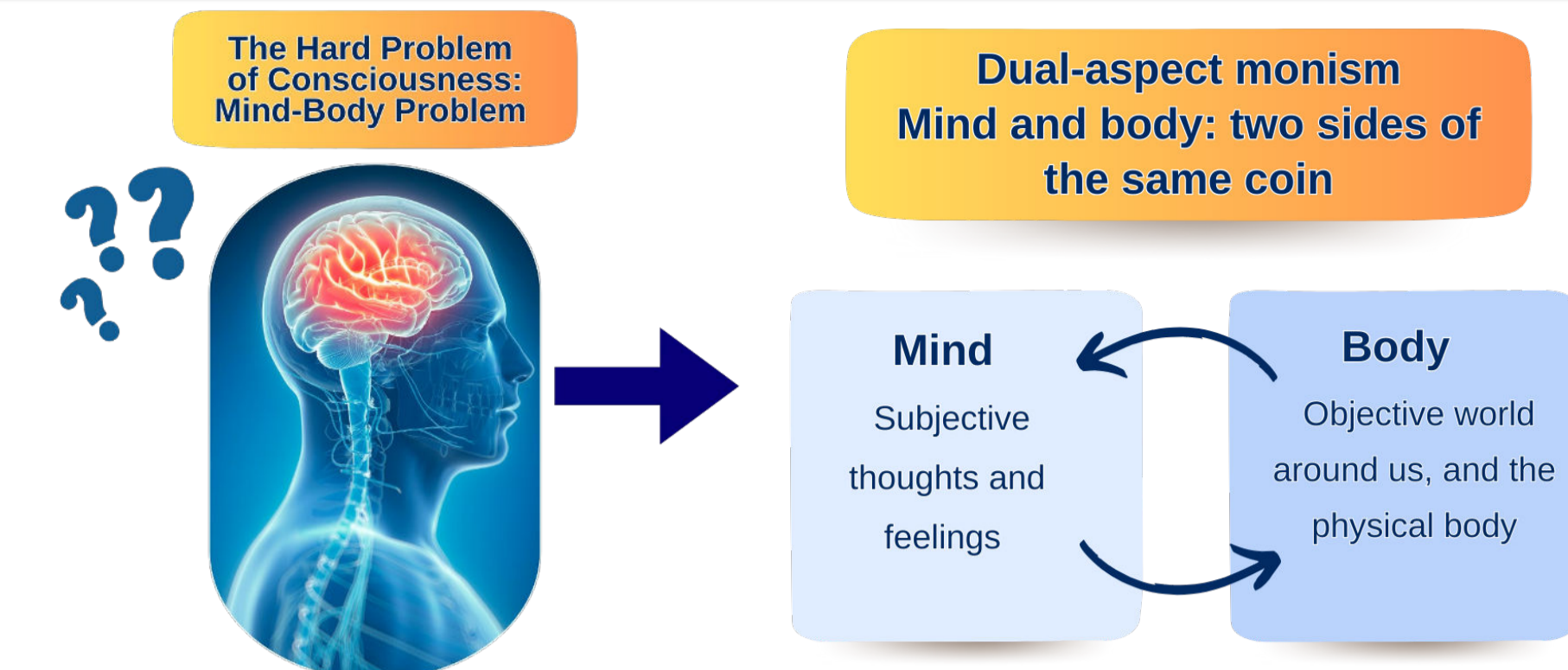
- How does dual-aspect monism justifiably propose that **mind and body have one underlying reality**?
- Where does **consciousness originate**? Does dual-aspect monism, akin to physicalism, assert **the brain** itself is the source of consciousness? If so, how? If not, how does it explain **consciousness's origin beyond the brain** and its connection to the body?
- If consciousness, from the perspective of dual-aspect monism, is defined as an internal process originating from the brain, how does this understanding align with the known **Orch OR theory**? This theory suggests that consciousness arises from quantum processes orchestrated within microtubules. And how do its proponents respond to 'objections' regarding the compatibility of such processes with brain conditions? (e.g., Quantum events in microtubules require an unattainably large negative temperature).
- Does dual-aspect monism contribute to **'identity'** and **'ethics'**?

T-CONSCIOUSNESS VS. CONSCIOUSNESS

- **T-Consciousness (non-material & non-energetic)**: one of the three existing elements of the universe apart from matter and energy.
- **T-Consciousness Fields (TCFs)**: unique qualitative fields derived from an immaterial intelligent network, named by Taheri the *Cosmic Consciousness Network (CCN)*.



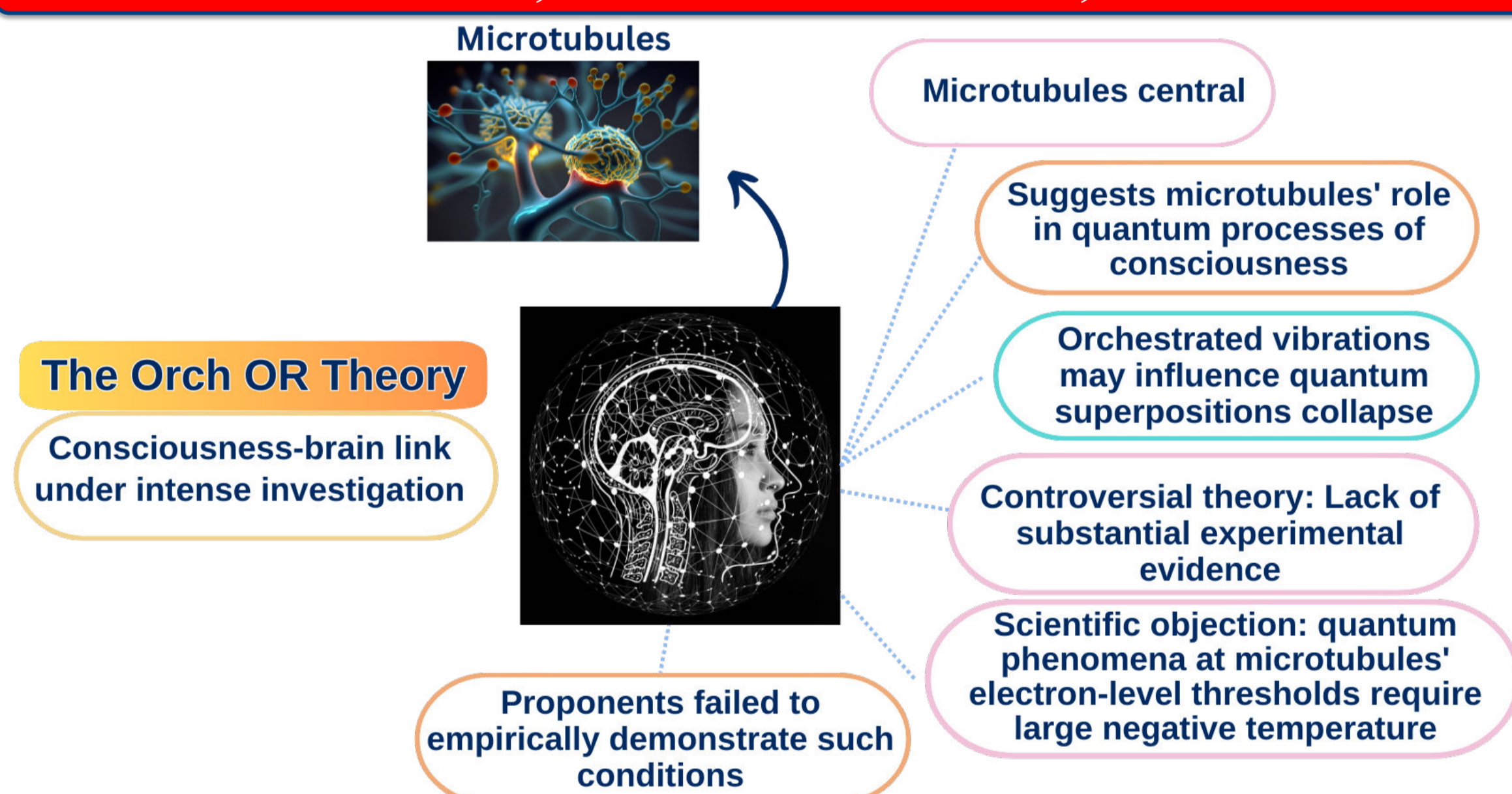
- **Consciousness** - the "what-it-is-like" experience with self/world awareness is a multifaceted enigma studied in neuroscience, philosophy, cognitive science, and psychology.
- Most often, the brain, consciousness, and mind are considered to be intricately intertwined.
- Physicalism regards the brain and consciousness as essentially 'identical' substances.



RESEARCH OBJECTIVES

- Critiquing dual-aspect monism, highlighting its flaws.
- Introducing **T-Consciousness**: A non-material, non-energetic element.
- T-Consciousness experiments & Taheri's theories: Critiquing brain-based consciousness (e.g., microtubule models).
- T-Consciousness & Mind-body dualism (body: **Hardware** and mind: **Software**): Optimal case.
- Taheri's approach on mind/consciousness:
 - The brain only **detects**, not **generates** consciousness.
 - The locus of **command center/body management**: cannot be inside the brain.
 - Mind as software, underlying all.
 - T-Consciousness research demonstrates mind in diverse materials
- Taheri's approach on 'identity' & 'ethics':
 - Consciousness/mind beyond physical brain, introducing **Interuniversal Identity**.
 - Paving way for new mind-body 'ethics'.

MICROTUBULES, CONSCIOUSNESS, & THE BRAIN



TCFs EXPERIMENTS ON THE MIND AND BRAIN

i) Task-fMRI Group and Functional Connectivity Analysis of the Brain

- Connections among brain regions decrease, microtubule associations diminish.
- Hemispheric disconnection rises with TCFs presence, despite individuals remaining conscious.
- Engagement with TCFs leads to **increased brain inactivity**, per graph analysis.
- Signals **decrease** significantly, suggesting brain not aiming to **'generate'** consciousness.
- Experiment rejects hypothesis: The brain's inactive regions **'increase'** instead of becoming more active to produce consciousness.
- Different brain areas fail to become more active, indicating **'detection'** and not **'generation'**.

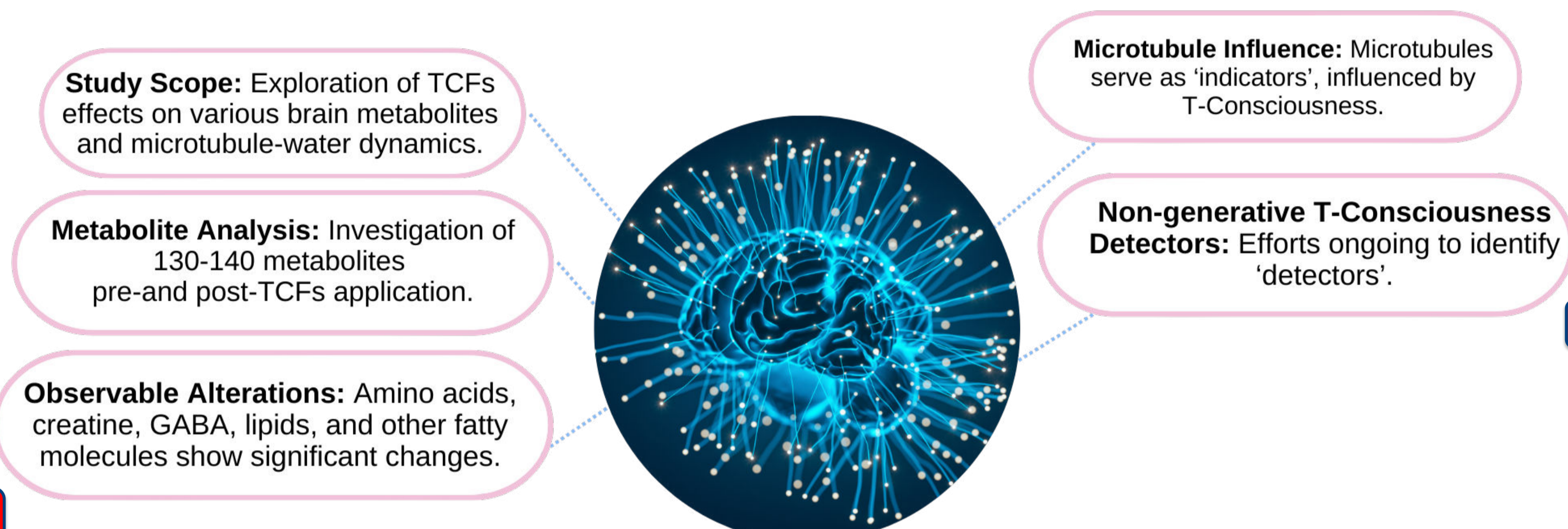
Study's message:
The brain cannot be a generator of consciousness.

ii) Investigating the Effect of TCFs on the Behavior of the Laser Light in Passing through an Aperture and Observing the Heisenberg Uncertainty Principle

- Observer Influence: Significant reduction in conventional observer influence near aperture observed.
- TCFs Impact: Negligible impact on laser light behavior alone, but substantial alterations when integrated into aperture setup.
- Physics Principle: Light passing through slit shifts from wave to particle-like behavior due to observer effect.
- TCFs Treatment: Decrease in observer role of slit, leading to light approaching inherent wave-like nature.
- Implications: Direct observer effect noted with TCFs, altering role of observers in experiments.

Study's message:
➤ TCFs impact on observer effect signifies separation of T-Consciousness from human nature.
➤ Nature of T-Consciousness: Distinct from nature of observation; demonstrated independence from material world.
➤ **TCFs experiments show T-Consciousness influence beyond material world, altering observed behavior (The brain)**

iii) Beyond Microtubules: Exploring TCFs effects on various brain metabolites (Upcoming TCFs Research Publications)



Study's message:
The TCFs experiments have demonstrated that other smaller molecules can also be candidates for **'detection'** by consciousness/mind (the software), behind the hardware (the brain) beyond microtubules. What is interpreted as **orchestration** is that microtubules and other molecules **'detect'** this consciousness (software) and not **'generate'** it.

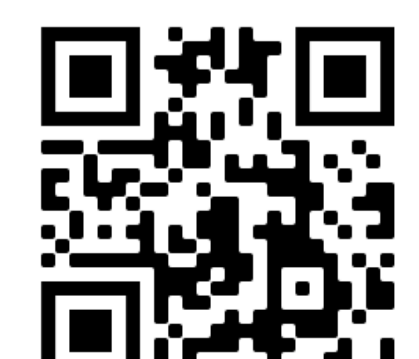
iv) The Theory of the Existence of the "Mental Body in Matter" Based on the Experimental Laboratory Results & TCFs

- Taheri's theories: The mind is construed as the backstage 'software' underlying any 'hardware'. T-Consciousness research evidences the presence of varying levels of mind, extending even to inanimate entities, such as **diverse metals**.
- Investigating the effects of TCFs on material properties and behavior.
- Proposal of the concept of a **mental body** for matter, encompassing information on its components, formation process, and mental states.
- Function of the mental body to maintain information, interact with TCFs, and exhibit behavior based on mental states.
- Observation of TCFs effects from two aspects: TCFs and Matter, without energy exchange or structural changes.
- Explanation for changes in material properties and behavior under TCFs influence without energy level alteration or structural changes.

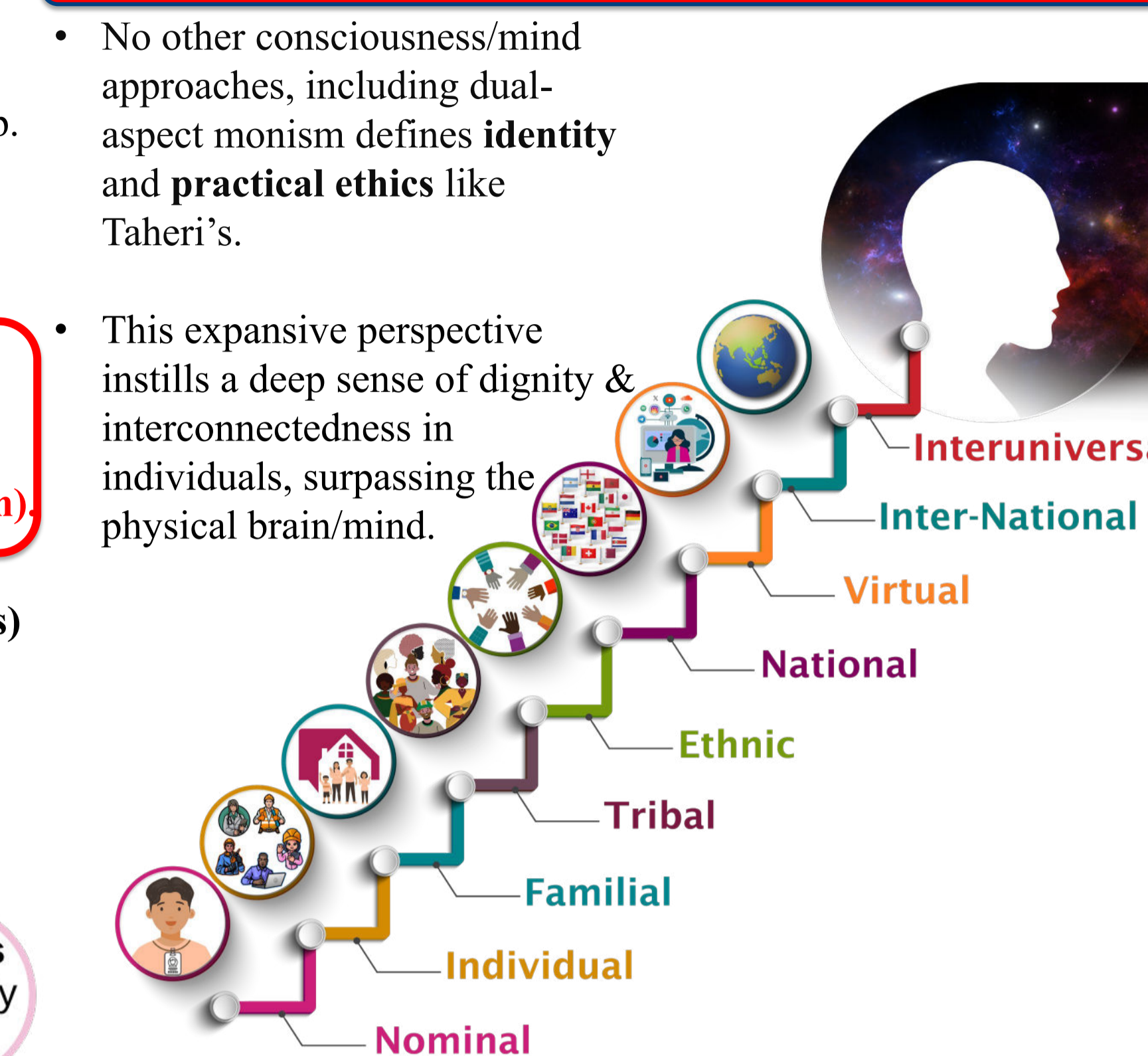
THE BRAIN: COMMANDER OR SUBORDINATE?

- Taheri's approach challenges brain-based models, prompting a distinct framework for human behavior, and suggesting a need for **explanations beyond the brain's material/physical structure**.

- Neural messaging and human behavior: Microtubules' role?
- Electrical circuit and qualitative phenomena like insight, perception, thought, emotion: Microtubules' impact?
- Binary neural communication vs. complex behavior?
- 'Quality' creation in electrical circuits from 'quantity'?
- Electrical devices and human qualities?
- Complex emotions arise from simple neural action potential?
- Reducing complex capabilities and oversimplification of neural action potential?
- Brain's fuzzy logic: Microtubules' role in emotional expression like anger, love, and fear?
- Can an electrical circuit like the brain generate human qualities & characteristics?
- Inter-neuronal communication management?
- Selection and management of neurons?
- Trial and error in neural communication?
-



INTERUNIVERSAL IDENTITY



REFERENCES

Atmanspacher, H. (2014). 20th Century Variants of Dual-Aspect Thinking. *Mind and Matter*, 12.

Atmanspacher, H., & Rickles, D. (2022). *Dual-Aspect Monism and the Deep Structure of Meaning*. New York: Routledge.

Benovsky, J. (2015). Dual-Aspect Monism. *Philosophical Investigations*, 39(4), 335-352.

Chalmers, D. (1995). Facing Up to the Problem of Consciousness. *Journal of Consciousness Studies*, 2(3), 200-219.

Clark, A., & Chalmers, D. J. (1998). The Extended Mind. *Analysis*, 58(1), 7-19.

Hameroff, S., & Penrose, R. (2014). Consciousness in the Universe: A review of the 'Orch OR' Theory. *Physics of life reviews*, 11(1), 39-78. <https://doi.org/10.1016/j.plrev.2013.08.002>.

Hameroff, S., & Penrose, R. (1996). Orchestrated Reduction of Quantum Coherence in Brain Microtubules: A Model for Consciousness. *Mathematics and Computers in Simulation*, 40(3), 453-480.

Hameroff, S. R. (1998). Quantum Computation in Brain Microtubules? The Penrose-Hameroff 'Orch OR' Model of Consciousness. *Philosophical Transactions of the Royal Society B*.

Sahu, S., Ghosh, S., Ghosh, B., Aswani, K., Hirata, K., Fujita, D., & Bandyopadhyay, A. (2013). Atomic water channel controlling remarkable properties of a single brain microtubule: correlating single protein to its supramolecular assembly. *Biosensors & Bioelectronics*, 47, 141-148.

Sapolsky, R. M. (2023). *Determined, A Science of Life without Free Will*. New York: Penguin Press.

Smith, K. (2008). Brain Makes Decisions Before You Even Know It. *Nature*. <https://doi.org/10.1038/news.2008.751>

Stoljar, D. "Physicalism", *The Stanford Encyclopedia of Philosophy* (Spring 2024 Edition), Edward N. Zalta & Uri Nodelman (eds.), forthcoming URL = <<https://plato.stanford.edu/archives/spr2024/entries/physicalism/>>.

Taheri, M. A., Torabi, S., Nabavi, N., Modarresi-Asem, F., Abbasi Sisara, M., Maftoun, P., & Semsarha, F. (2022). Task-fMRI Group and Functional Connectivity Analysis of the Brain During Faradarnani Consciousness Field Connection. *The Scientific Journal of Cosmointel*, 1(2), 46-55.

Taheri, M. A., Payervand, F., Ahmadkhanlou, F., Torabi, S., & Semsarha, F. (2022). Investigating the Effect of Taheri Consciousness Fields on the Behavior of the Laser Light in Passing through an Aperture and Observing the Heisenberg Uncertainty Principle. *The Scientific Journal of Cosmointel*, 1(4), 30-38.

Taheri, M. A., Payervand, F., Ahmadkhanlou, F., & Semsarha, F. (2022). The Theory of the Existence of the "Mental Body in Matter" Based on the Experimental Laboratory Results and Taheri Consciousness Fields. *The Scientific Journal of Cosmointel*, 1(4), 40-51.

Taheri, M. A. [@MohammadAliTaheriOfficial]. (2023, August 22). Cosmointel Short Talk- Brain Hardware for Unveiling Perception & Conscious Experience Symposium 2023 [Video]. YouTube. [Cosmointel Short Talk- Brain Hardware for Unveiling Perception & Conscious Experience Symposium 2023 \(youtube.com\)](https://www.youtube.com/watch?v=...)

Taheri, M. A. [@MohammadAliTaheriOfficial]. (2023, August 22). Cosmointel Short Talk - Evidence Supporting the Existence of Varied Levels of Mind - Symposium 2023 [Video]. YouTube. [Cosmointel Short Talk - Evidence Supporting the Existence of Varied Levels of Mind - Symposium 2023 \(youtube.com\)](https://www.youtube.com/watch?v=...)

Taheri, M. A. [@MohammadAliTaheriOfficial]. (2023, August 22). Cosmointel - Applied Variant Consciousness Fields Can Revolutionize Neuroscience - Symposium 2023 [Video]. YouTube. [Cosmointel - Applied Variant Consciousness Fields Can Revolutionize Neuroscience - Symposium 2023 \(youtube.com\)](https://www.youtube.com/watch?v=...)

Taheri, M. A. [@MohammadAliTaheriOfficial]. (2023, August 18). 01- The Brain: Commander or Subordinate (A documentary) - Episode 1 - By Mohammad Ali Taheri [Video]. YouTube. [01- The Brain: Commander or Subordinate \(A documentary\) - Episode 1 - By Mohammad Ali Taheri \(youtube.com\)](https://www.youtube.com/watch?v=...)

Taheri, M. A. (2020). Interuniversal Identity. Retrieved from <https://mataheri.com/interuniversal-hovvat/>. (In Persian Language).


Taheri, M. A. (2013). *Human from Another Outlook* (2nd ed.): Interuniversal Press. ISBN: 978-1939507006, 1939507006.

Taheri, M. A. (2011). *Psychology*. Tehran: Interuniversal Press.

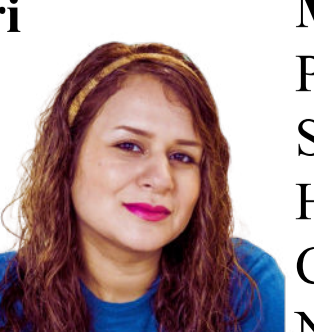
Taheri, M. A. (2020). The main monitoring center for T-Consciousness Fields research and studies based on Sciencefact. www.Cosmointel.com.

Van Gulick, R. "Consciousness", *The Stanford Encyclopedia of Philosophy* (Winter 2022 Edition), Edward N. Zalta & Uri Nodelman (eds.), URL = <https://plato.stanford.edu/archives/win2022/entries/consciousness/>

RESEARCH TEAM



Mohammad Ali Taheri
Sciencefact R&D Department, Cosmointel Inc. Research Center, Ontario, Canada



Mehrnaz Monzavi
PhD in Philosophy; Science and Humanities; Canterbury University, New Zealand

CONCLUSION

This study critiques dual-aspect monism, emphasizing its ambiguity in defining consciousness and its failure to reconcile the relationship between the brain and mind. Dual aspect monism does not involve itself with significant consciousness theories like Orch OR and does not explore the potential role of microtubules in consciousness. In contrast, T-Consciousness studies propose alternative models that challenge brain-centric perspectives and microtubule models, suggesting the mind (software backstage) manages the brain (hardware). Furthermore, Taheri's work indicates that levels of consciousness exist beyond biological substrates, even in different metals. Taheri also introduces the concept of the Interuniversal Identity, expanding ethical considerations beyond brain-centric consciousness perspectives.

ACKNOWLEDGEMENTS

The authors express heartfelt gratitude to Dr. Farid Semsarha and Dr. Mahyar Ramezanzadeh for their invaluable ideas and feedback. Special thanks to S. Naseri for the stunning artwork illustrating the Interuniversal Identity.